

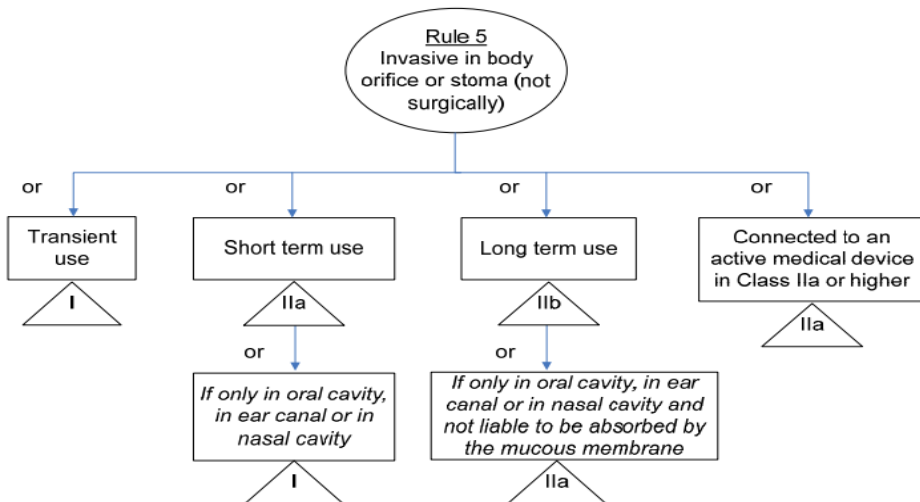
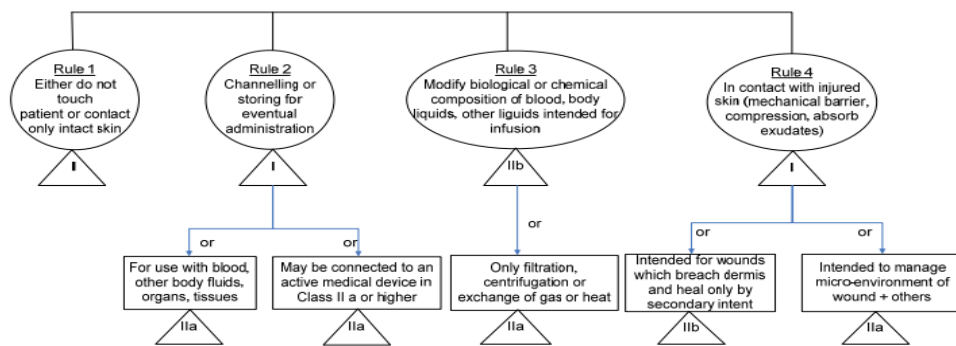
تصنيف المستلزمات والأجهزة الطبية:

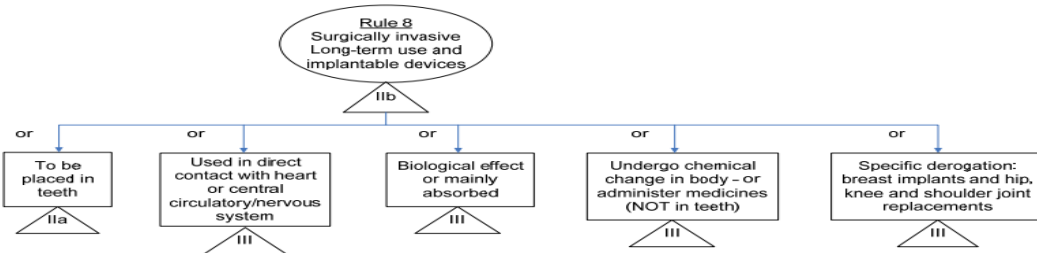
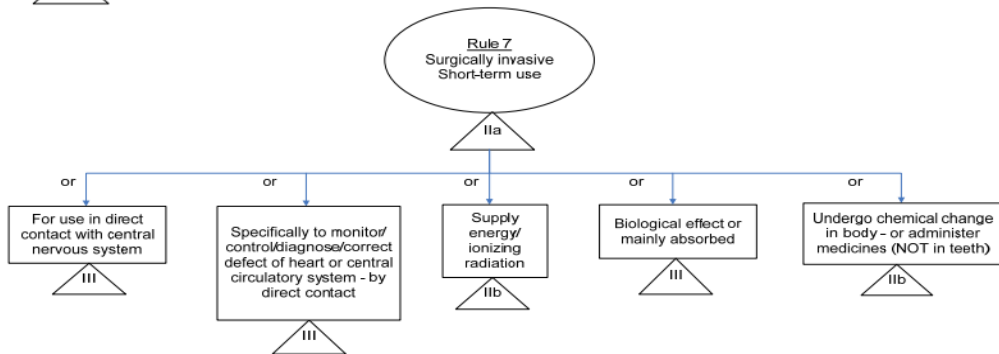
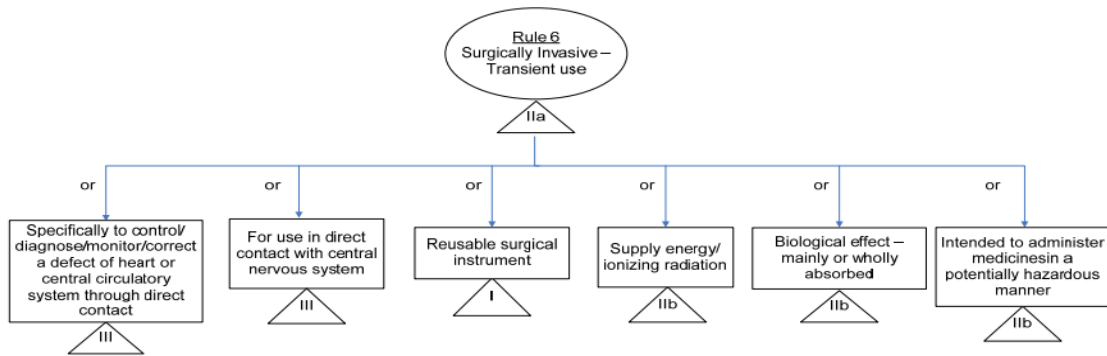
تقوم وزارة الصحة بتصنيف وتسجيل الأجهزة والمستلزمات الطبية المصنعة محليا طبقا للتصنيف الذي للجنة
(التصنيف الأوروبي (European Directive of the Medical Devices 93/42/EEC

CONFORMITY ASSESSMENT PROCEDURES	CLASSES					
	I	I Sterile	I measure	Ila	Ilb	III
II (+ section 4)						√
II (- section 4)		√	√	√	√	
III					√	√
IV		√	√	√	√	√
V		√	√	√	√	√
VI		√	√	√	√	
VII	√	√	√	√		

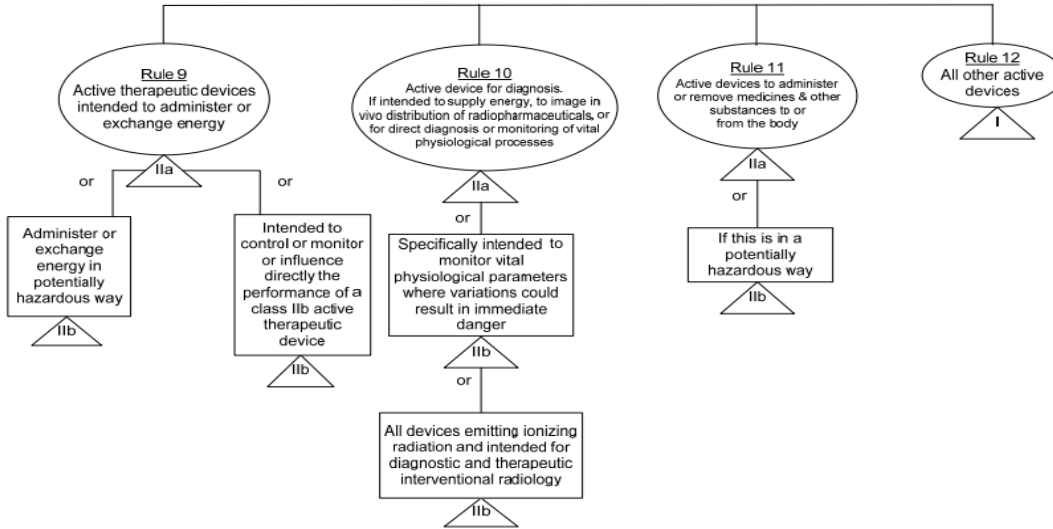
Technical documentation relating to products in class Ila and class Ilb must be reviewed by a notified body of the basis of a programme of representative sampling in the context of Annexes II, V and VI of Directive 93/42/EEC.

NON INVASIVE DEVICES





ACTIVE DEVICES



SPECIAL RULES

